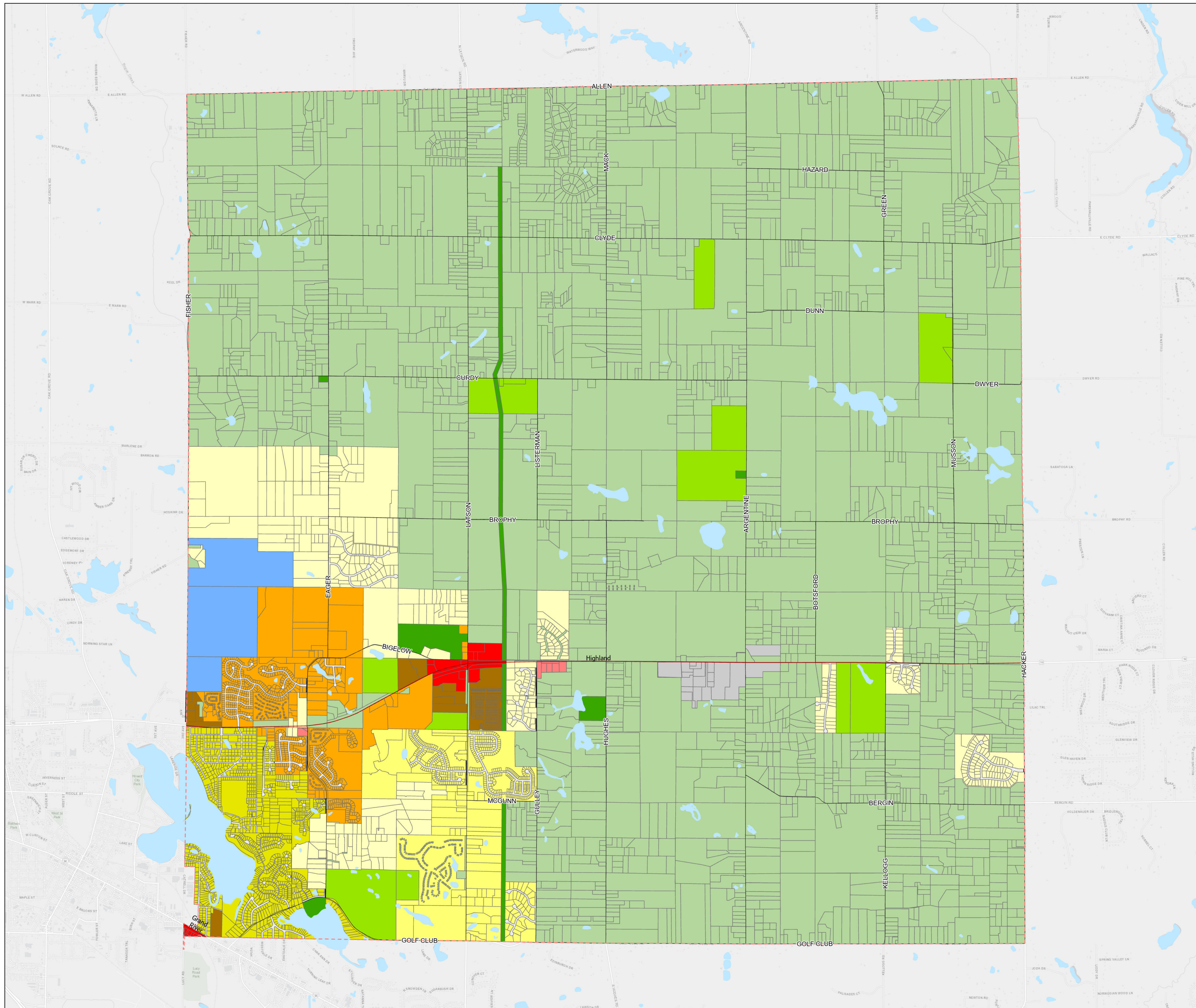


# Future Land Use Map

Oceola Township, Livingston County, MI

Adopted October 4, 2022, Parcel Base Updated January 26, 2024



## LEGEND

- Low Density Residential A
- Low Density Residential B
- Low/Medium Residential
- Medium Density Residential
- High Density Residential
- Neighborhood Commercial
- General Commercial
- General Industrial
- Recreation/Open Space
- Public/Semi Public
- Education and Technology
- Roads
- Agricultural/Large Lot Residential
- Township Boundary
- Standards\_StateHighways\_Clip1



Basemap Source: Michigan Center for Geographic Information, Version 17a.  
Data Source: Oceola Township 2023. McKenna 2023.